



Glider Sash Upgrade

LINCOLNWOOD PRODUCTS, INC.

TOOLS REQUIRED:

Hammer, Pliers, Putty Knife and small finishing nails.

PARTS SUPPLIED:

- 2 Sash (1 Interior & 1 Exterior)
- 2 Head Jamb Foam Gaskets
- One Head Track
- Foam Weatherstrip
- 4 - Anti lift clips

DOUBLE GLIDER INSTALLATION

1. Remove the existing sash from the window by moving the interior sash horizontally to the **midpoint** of the frame. While holding one side of the sash in each hand, lift up and move the bottom of the sash toward the interior. When the bottom of the sash is clear, the sash can be lowered and removed from the window. Fig. 1

Repeat the same process to remove the exterior sash.

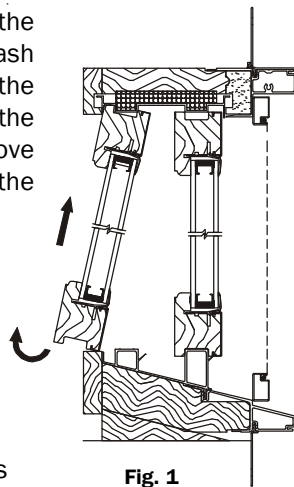


Fig. 1

2. Remove the vinyl parting stops from the side jambs and save them for reuse. Fig. 2.

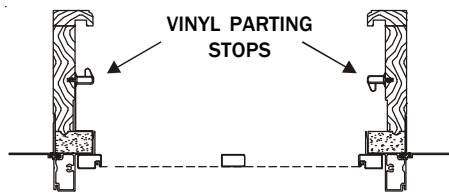


Fig. 2

3. Remove the track from the head jamb along with the foam backer and discard. Fig. 3

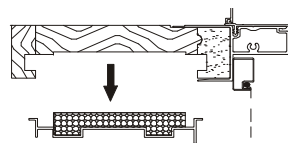


Fig. 3

4. Apply the new foam head jamb gaskets at the top of each side jamb. Fig. 4.

FOAM HEAD JAMB GASKETS

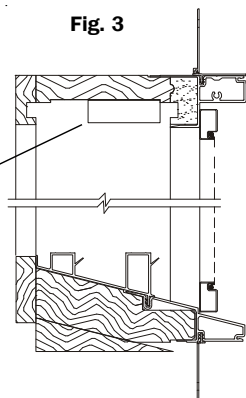


Fig. 4

5. Install the head jamb gasket in place, Fig. 5, making sure the foam strip is to the exterior. Using a few small finishing nails to secure it into the head, Fig. 6. The number of nails will depend on the overall width.

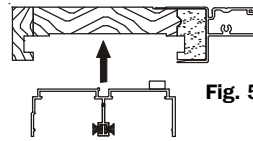


Fig. 5

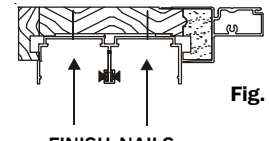


Fig. 6

FINISH NAILS

6. Install the new foam weatherstrip into the side jamb that the exterior sash will be seated against, Fig. 7. This weatherstrip will replace one of the vinyl parting stops that you removed earlier.

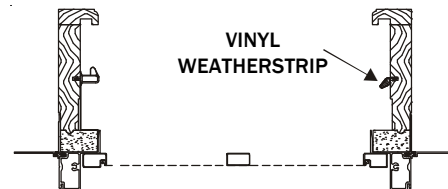


Fig. 7

On the opposite side jamb, the old parting stop can now be reapplied. To do so, you will need to trim the parting stop to the new height between the sill and the new head track. This fit needs to be tight as this seals the interior sash from the outside.

8. Install the new sash beginning with the outside sash and then the interior sash. Once installed, check the sash for operation and locking.

9. The supplied anti-lift clips need to be installed before the installation is complete, Fig. 8. Place these a couple inches away from each side jamb to prevent the window from being pried open from the exterior.

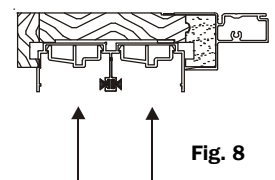


Fig. 8

TRIPLE GLIDER INSTALLATION

If you are replacing the sash in a triple glider, the procedure is the primarily the same as a standard glider.

The exception will be when the center sash is installed, it will need to be anchored so it doesn't move. To anchor, install the supplied clips, as shown in fig. 9, to the sash and track on each side of the stationary center sash.

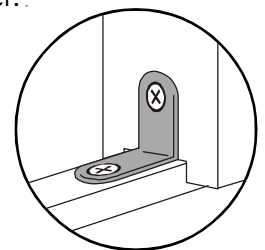


Fig. 9