



Patio Doors

SWING • SLIDE • FOLDING • MULTI-SLIDE • LIFT & SLIDE



Patio Doors

Dramatic styling and impressive functionality are hallmark attributes defining our patio door collections. Lincoln's vast range of patio door offerings is sure to please architects, builders and homeowners by having just the right design element. Choose from a long list of eye-catching features such as personalized colors, virtually endless grill patterns and numerous hardware finishes.

Style and function means manufacturing doors that slide, swing in, swing out, fold and a great deal more! We build standard and custom size units, offer creative panel configurations, radius swing doors, operating sidelites, utilize high performance glazing options and even produce 10' tall products.

Market segments served:

- Residential
- Remodeling
- Renovation
- Light Commercial



Contemporary Style

Style can mean different things to different clients. The current design movement, being labeled as 'contemporary', focuses on the pronounced effect of utilizing more glass area with less visible framing material.

We know our place here. Lincoln provides the natural light!

Our 3 ¾" stile door panel is just the right option to get that job done. The panel face is 1 ½" narrower than the standard door creating perfect proportions. This great aesthetic is further enhanced with the clean and straight features of the Dallas handle set, which is available in five (5) exceptional finishes.

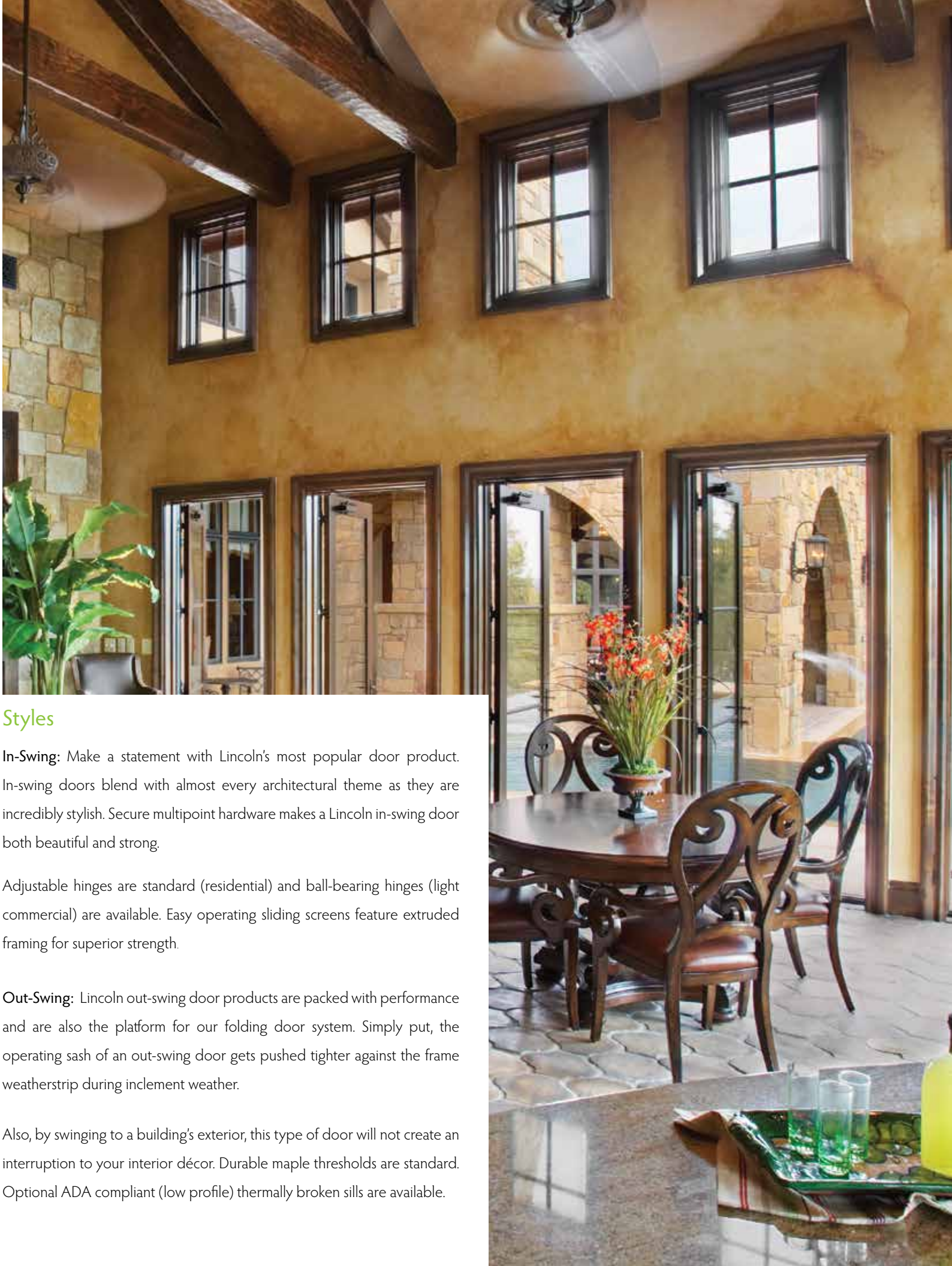
Be sure to design your next building project with Lincoln Patio Doors. With standard sizes up to 10' in height, smart energy efficient glazing options, multiple Simulated Divided Lite styles and endless grille patterns, finding the perfect fit becomes simple.

SWING PATIO DOORS

Options

Accommodating, functional and versatile accurately describes Lincoln's swing patio door product category. Narrower 3 ¾" stile panels embrace modern architectural appeal for clients looking to maximize daylighting in your choice of an in-swing or out-swing operation.

Large configurations with transoms can be factory mulled and shipped. Pick the door that's right for you from Lincoln and enjoy the possibilities.



Styles

In-Swing: Make a statement with Lincoln's most popular door product. In-swing doors blend with almost every architectural theme as they are incredibly stylish. Secure multipoint hardware makes a Lincoln in-swing door both beautiful and strong.

Adjustable hinges are standard (residential) and ball-bearing hinges (light commercial) are available. Easy operating sliding screens feature extruded framing for superior strength.

Out-Swing: Lincoln out-swing door products are packed with performance and are also the platform for our folding door system. Simply put, the operating sash of an out-swing door gets pushed tighter against the frame weatherstrip during inclement weather.

Also, by swinging to a building's exterior, this type of door will not create an interruption to your interior décor. Durable maple thresholds are standard. Optional ADA compliant (low profile) thermally broken sills are available.

SWING PATIO DOORS

French Doors

A French style swing patio doors' most distinguishable feature is its ability to have both panels operate. Lincoln offers extremely functional in-swing or out-swing models that can be used for large object passageways. An active panel operates as the primary operator and the passive panel need only be utilized when you want use of the entire opening. French doors may also be configured with different panel widths. Offset panel sizes create an entrance style look with the functionality of a large net clear opening.

Our strong 3-point & 5-point hardware system looks great, locks securely and is available with either a handle activated bolt or center activated bolt (dummy handle optional). French doors are available in 2, 3 or 4-wide configurations.



Segment & Full Radius Top

Enhance your home with a little curve appeal from Lincoln. By utilizing a segment top swing patio door in your design you incorporate a subtle accent that compliments almost any architectural theme.

The radius option, available in 6' radius only, can be used with both in-swing and out-swing patio doors. Select your radius top option for a single door or use it with our factory mulled side-lite combinations for a more dramatic statement.

Whether viewed from the curb or inside your home, the gentle slope of our radius doors have lasting design appeal.

1 3/4" SWING PATIO DOORS

Our most comprehensive door category, swing products are widely used for nearly every type of project including new construction, remodeling and light commercial. Swing doors are versatile, long-lasting and design friendly.

Configurations

- 1, 2, 3 and 4-wide
- French doors: 2, 3 and 4-wide
- Transoms: 1, 2, 3 and 4-wide
- Sidelites: 2 1/2", 3 3/8" & 4 13/16" Stiles
- Segment head:
 - 1 and 2-wide
 - French 2-wide
 - Quarter segment French sidelite
- Full Radius

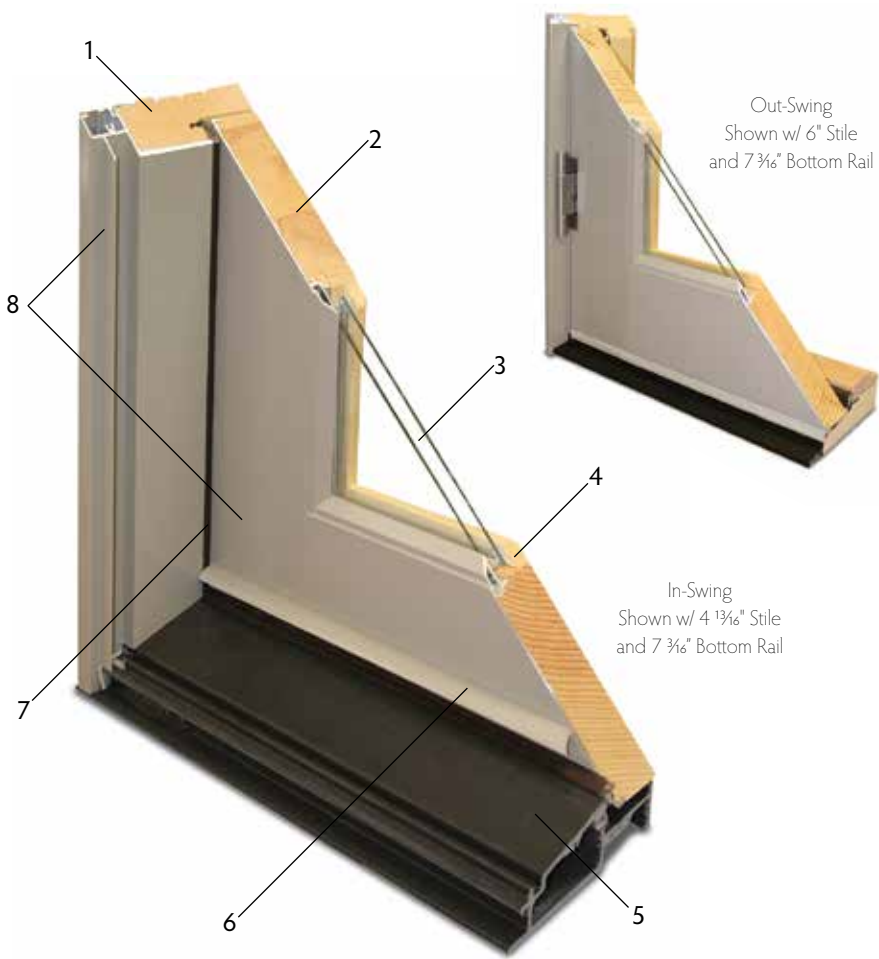


2 1/4" SWING PATIO DOORS

The 2 1/4" door program is the perfect complement and extension to Lincoln's significant swing door offering. Greater heights (up to 10' tall) are achieved with the 2 1/4" panel system including our optional Lifestyle door panel. 5-point locking hardware is standard.

Configurations

- 1 & 2 wide
- French doors: 2 wide
- Transoms: 1 & 2 wide
- Sidelites: 3 3/8" & 4 13/16" Stiles



	Specifications
Maximum RO Width	1 wide = 3' 7 7/8" -- 2 wide= 6' 2 1/8"
Maximum RO Height	9' 2 3/4"
Door Panel Thickness	1 3/4" thick panels
Stile Widths	3 3/8", 4 13/16" & 6"
Top Rail Heights	3 3/8", 4 13/16" & 6"
Bottom Rail Heights	4 13/16", 7 3/8" & 12"

- 1. 4 1/16" jamb.
- 2. 1 3/4" thick panels.
- 3. 3/4" tempered insulating glass.
- 4. Interior wood glazing bead.
- 5. .125 pultruded resin coated fiberglass sill.
- 6. Panel drip edge.
- 7. Full surround weatherstrip.
- 8. .050 extruded aluminum clad on sash and frame. Wood units have primed panels on the exterior with cPVC brickmould.



	Specifications
Maximum RO Width	1 wide = 3' 7 7/8" -- 2 wide= 7' 2 1/8"
Maximum RO Height	10' 2 3/4"
Door Panel Thickness	2 1/4" thick panels
Stile Widths	3 3/8", 4 13/16" & 6"
Top Rail Heights	3 3/8", 4 13/16" & 6"
Bottom Rail Heights	4 13/16", 7 3/8" & 12"

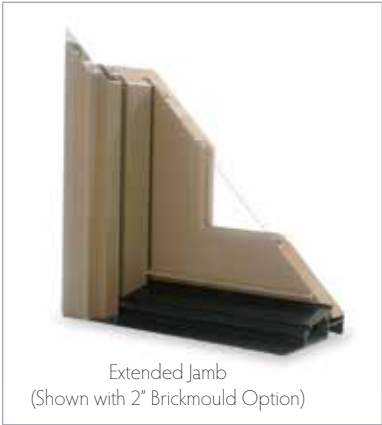
- 1. 5 1/8" jamb.
- 2. 2 1/4" thick panels.
- 3. 3/4" tempered insulating glass & 1 3/8" Triple Pane.
- 4. Interior wood glazing bead.
- 5. .125 pultruded resin coated fiberglass sill.
- 6. Panel drip edge.
- 7. Full surround weatherstrip.
- 8. .050 extruded aluminum clad on sash and frame. Wood units have primed panels on the exterior with cPVC brickmould.

SWING PATIO DOORS

Entry Sill

Lincoln's entry sill option resists weathering, keeps air and water out while providing long-lasting adjustability.

- Adjustable PVC rail with ImperiSeal continuous gasket
- Bronze contemporary exterior color
- Composite underlayment is durable, non-rot and thermally advanced
- In-swing doors with 4 1⁄8" or 6 1⁄8" jamb depth.
- Color matched door sweep



Extended Jamb
(Shown with 2" Brickmould Option)



ADA Sill

In-Swing Extended Jamb

Lincoln swing doors feature a 4 1⁄8" jamb depth that will accommodate an additional 2" clad extrusion to the exterior. Doors extended in this fashion will have full hinge travel on a 6 1⁄8" wall thickness. Additional interior wood jamb extensions are available for thicker walls.

ADA Sill

Low profile sills are easily adaptable to our frame components making the Lincoln swing doors ADA code compliant and can be used in most light commercial applications.

ADA sills are constructed with extremely durable dark bronze anodized aluminum complete with a thermal break for better energy efficiency. This option is available in 4 1⁄8" and 6 1⁄8" jamb depth.



SWING PATIO DOORS

Mid-Rail & Wide Bottom Rail

Accessorize your swing doors by inserting an optional mid-rail. Rails run horizontally and can be located at virtually any height. Additional divisions are made by adding a vertical rail. The spaces created can be filled with raised panels, flat panels or insulated glass. Mid-rail sizes are 3 3⁄4", 4 3⁄4" and 6 3⁄4" and may be used together on the same panel.

Three bottom rail choices add versatility to swing patio door panels. The bottom rail options include nominal measurements of 4 1⁄8", 7 3⁄8" and 12". Choose one of the bottom rails with any door height and design a door panel best suited for your project. Commonly used on taller residential doors and in light commercial applications, our durable 12" bottom rail allows ample room for a kick plate.



Flat Panel & Raised Panel

With a mid-rail used horizontally and/or vertically, you can place panels at standard and custom height locations to further enhance the door design.

The stylish and architecturally friendly raised panel adds depth and feel to contemporary or traditional design themes. Raised door panels feature durable color-matched polane painted exteriors.

Flat panels are popular because of straight clean aesthetically pleasing lines. These panels are insulated with a painted extruded aluminum veneer exterior (Aluminum Clad) and thick stain-grade wood interiors.



Commercial Doors

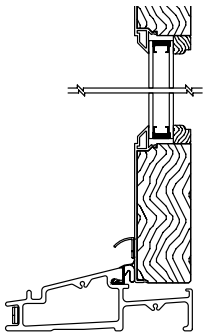
Fitting your commons area or vestibule with Lincoln's diverse door offering allows for continuity in design with matching clad colors, glazing appearance, durability, delivery and performance all backed with a substantial warranty.

Our door products are stylish, functional (both in-swing or out-swing) and can be specified with nearly endless size options and design configurations.

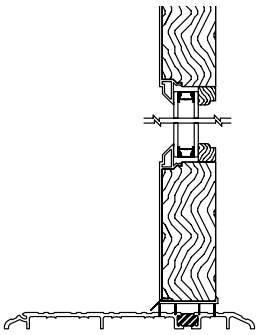
ADA Sill

Some commercial applications require swing door thresholds that do not exceed 1/2" total height above finished floor height.

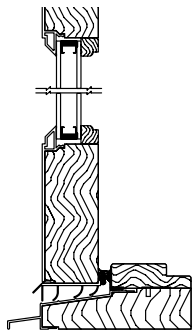
- Strategically located thermal break under door panel to reduce thermal transfer.
- Available on doors both at 4 1/8" and 6 1/8". Interior extension jams can be utilized for walls that vary.
- Bronze anodized finish.



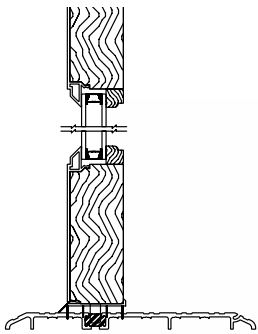
In-Swing Standard Sill



In-Swing ADA Sill



Out-Swing Standard Sill



Out-Swing ADA Sill



Concealed Cable Prep and Panel Spacing

A concealed cable route can be specified for doors to eliminate unsightly rods.

The cable prep consists of a 3/4" x 3/4" continuous route profile hidden inside the door panel for use with VonDuprin (or similar) panic bar systems.

Double wide doors can be specified without an astragal with spacing between panels for your weatherstrip detail. Options include: 3/16", 1/4", 3/8", 1/2".

Panel Combinations

Lincoln door panel thickness of 1 3/4" and 2 1/4" & multiple stile and rail configuration will suit your buildings style.

- Top Rail sizes: 3 3/8", 4 13/16", 6"
- Bottom Rail sizes: 4 13/16", 7 3/16", 12"
- Stile sizes: 3 3/8", 4 13/16", 6"
- Mid Rail sizes: 3 3/4", 4 3/4", 6 3/4"

Ball Bearing Hinges

Optional 4" ball bearing hinge are available in 9 spectacular finishes.

Hinges feature a 5/8" radius corner and NRP (non-removable pins) for added security.



Pre-Finished White and Black Interiors

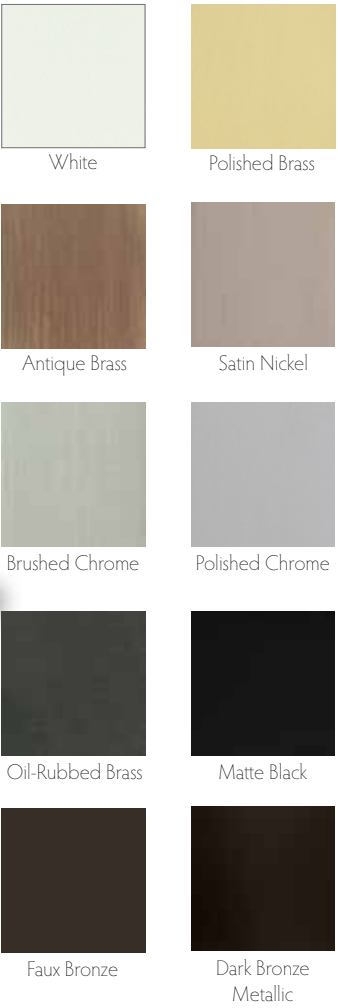
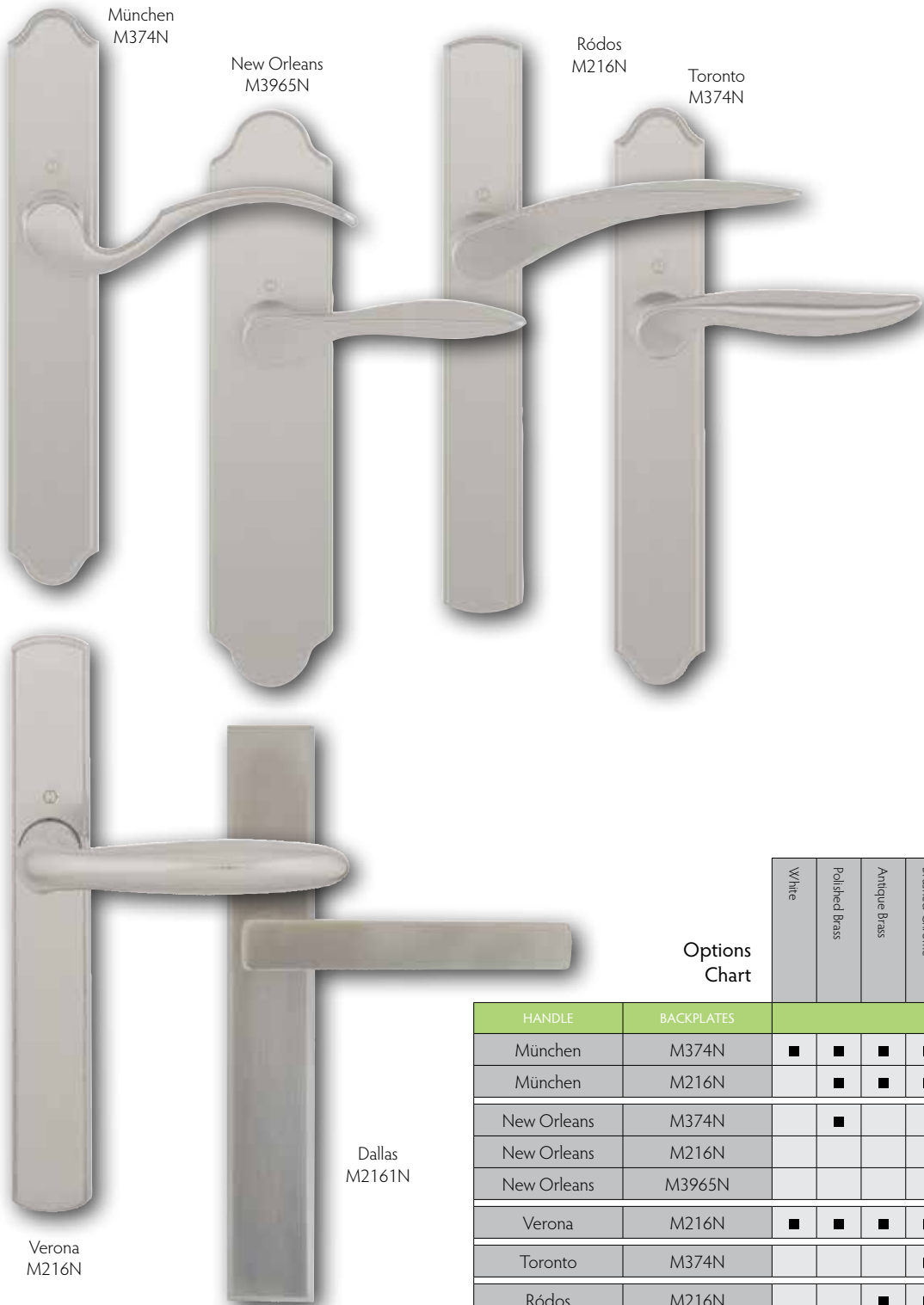
Take one thing off the general contractors' task list by finishing the interiors. Factory-applied painted interiors will save valuable time and money all while protecting the wood during the construction phase. Introduce your builder client to the peace of mind that a Lincoln factory finish provides.



SWING PATIO DOORS

Hardware

Handles & Backplates: Our handles are manufactured using the finest quality brass alloys. The surface of the handle, except oil-rubbed, is protected by a transparent enamel finish which offers strength and durability as well as a smooth, blemish free surface. Oil-Rubbed has a “live” finish that changes over time. Celebrate your distinctive design style by creating a handle package from our many finish options, lever choices and backplate styles.



		Options Chart									
HANDLE	BACKPLATES	White	Polished Brass	Antique Brass	Brushed Chrome	Polished Chrome	Satin Nickel	Oil-Rubbed Brass	Faux Bronze	Matte Black	Dark Bronze Metallic
München	M374N	■	■	■	■	■	■	■	■	■	
München	M216N		■	■	■		■	■	■	■	
New Orleans	M374N		■				■		■	■	
New Orleans	M216N						■	■	■	■	
New Orleans	M3965N						■		■		
Verona	M216N	■	■	■	■	■	■	■	■	■	
Toronto	M374N				■		■	■	■	■	
Ródos	M216N			■	■		■		■	■	
Dallas	M2161N		■				■		■	■	■

SWING PATIO DOORS

3-Point & 5-Point Hardware: As standard, active door panels utilize our multi-point (3-Point or 5-Point) hardware system. Engaging the multi-point system creates a tight seal, maintains straight door panels and is an added security measure. Passive doors are equipped with either a handle activated bolt system or the flush bolt version firing rods securely into the head and sill.

Single Point Hardware: While specifying your next entry system, consider the Single Point Hardware mechanism for easier operation. This hardware is simple to operate as no handle activation is required to throw the deadbolt or engage other locking points. This system accepts the same trim hardware and can be keyed alike to match all your other Lincoln swing doors.



Hinges: In-swing doors are equipped with adjustable hinges including a secure non-removable pin to ensure safe and smooth operation. Adjustments are made via the large 3/16" hex head screw both vertically (Set Hinge) and horizontally (Guide Hinge).

Standard Hinge Finishes



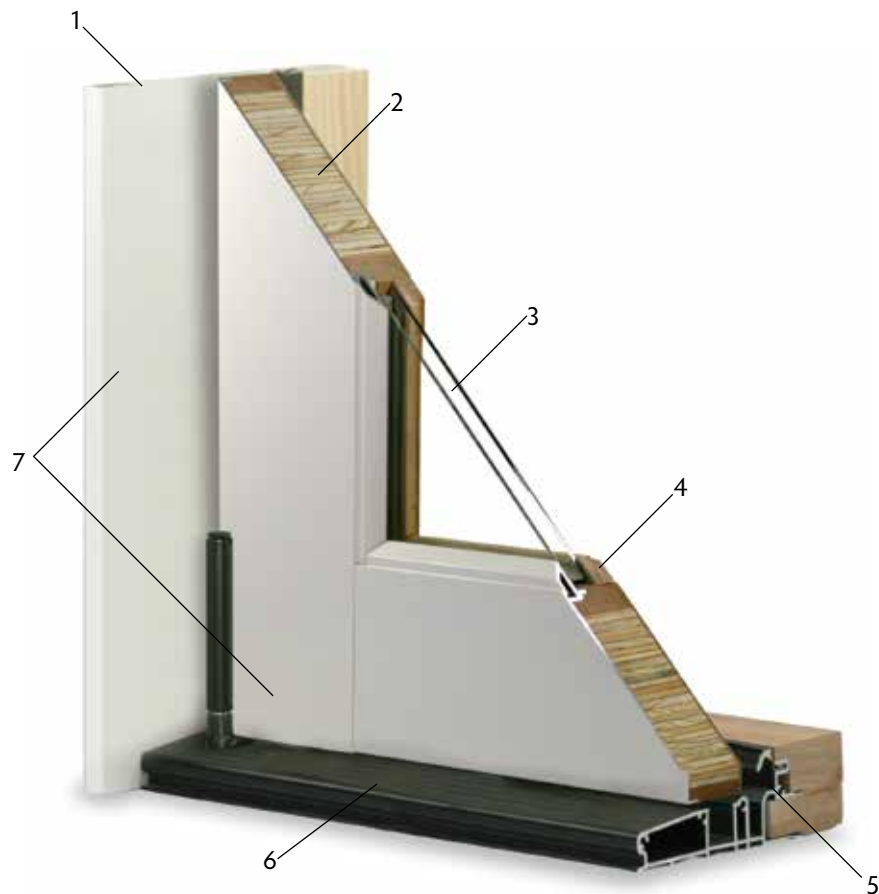
FOLDING PATIO DOORS

Distinctive rooms require an exceptional door system. Lincoln Folding doors, when completely opened, leave a stunning unobstructed view. Multiple configurations consist of stacking panels and may include an operable out-swing panel.

Configurations

Numerous out-swing configurations are available anywhere from one to eight panels in each direction and can include an access panel. The innovative hinge system enables all door panels to be made the same size regardless of the door configuration.

See examples of Lincoln's matching Folding Window at www.lincolnwindows.com.



	1 3/4" Panel Thickness	2 1/4" Panel Thickness
Maximum Panel Width	3' 6"	3' 6"
Maximum Panel Height	9' 0"	10' 0"
Maximum Number of Panels	16 Panels	16 Panels
Approx. Maximum Width	48'	48'
Maximum Height	9' 4 3/4"	10' 4 3/4"

NOTE: When using maximum door width and height, door may exceed maximum door weight. Calculated weight check should be done.

1. 5 1/2" jamb with clad exterior. 6 1/16" jamb on primed exterior.
2. 1 3/4" & 2 1/4" thick panels.
3. 3/4" tempered insulating glass & 1 3/8" Triple Pane. (2 1/4" panels only)
4. Interior wood glazing bead.
5. Full surround frame weatherstrip.
6. .080 extruded aluminum sill (shown) or recessed floor channel guide option.
7. .050 extruded aluminum clad on panels and frame.

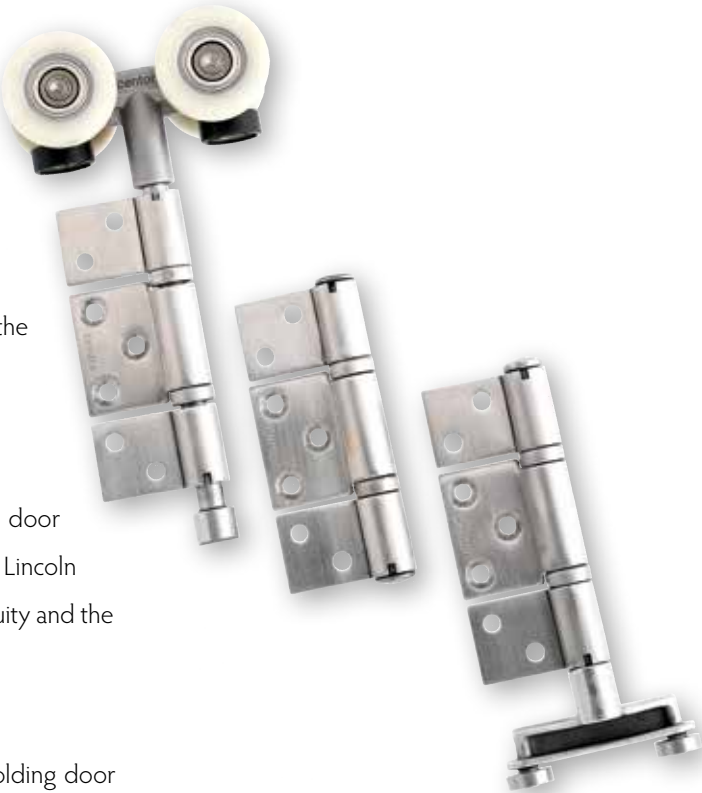
FOLDING PATIO DOORS

Hardware

Track, Guide Channel and Sill: The Fold-A-Way patio door has a top mounted track system allowing the weight of door to be carried on the header. The bottom guide glides with minimal effort in a polypropylene floor channel lining allowing a smooth, almost silent rolling action. A low threshold guide channel is available for internal applications - no obtrusive door sill, just a recessed track in the floor.

Handles & Backplates: The main operating panel for the folding door system utilizes the same high quality HOPPE hardware found on all Lincoln swing patio doors. The benefits include: matching styles, color continuity and the keyed alike feature.

Pull Handles, Hinges and Twinpoint: The remaining panels in the folding door system are operated using heavy-duty pull handles and hinges. Three hinges come standard with each Door panel - with a fourth hinge added for doors over 7'4". The twinpoint lever activates concealed rods into the head and sill for secure locking action.



Screens

All screens are made-to-order and specially configured for each bi-fold door system. They are available for openings up to 24' wide x 10' high and feature load balancing technology for effortless operation while remaining firmly in any chosen position until further pressure is applied. Screens store easily into its own frame when a clear opening is desired.

The tough PVC-coated polyester mesh used in the screen is hard wearing, resistant to damage, easy to clean and can be replaced if necessary. Choose a single function or double functioning system where six mesh options are available.



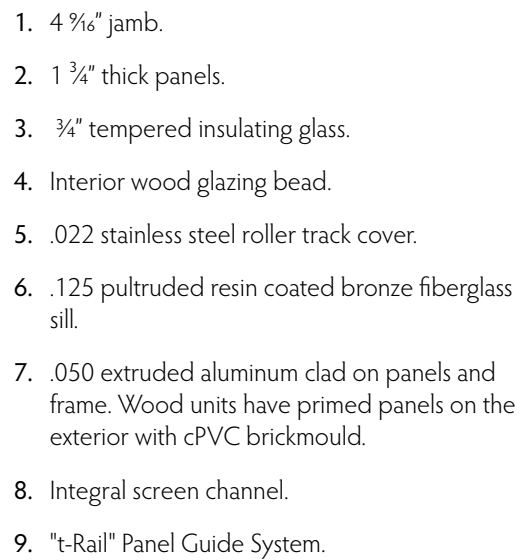
Featuring wide, lifestyle or narrow styles, our slide doors are a beautiful combination of practicality and performance. Light up your room and keep the weather outside all while avoiding the clearance needed with a swinging patio door.

Configurations

- 3 Stile Widths: 2½", 3⅞" & 4⅜"
- 2-wide
- 3-wide
- 4-wide (OXXO)
- Transoms: 1, 2, 3 and 4-wide
- Sidelites

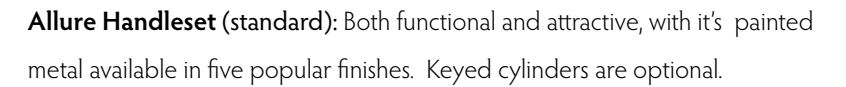
Configurations

-



High Performance Sill

Rollers & Handles: Slide patio doors feature a dual lock and keeper system with an optional keyed lock. This 2-point hardware securely engages the heavy-duty keeper by latching both upward and downward. Door panels glide easily on durable ball-bearing rollers.



Contempo Handleset: Building and completing a contemporary or modern design theme off requires the straight sleek lines of the Contempo handle set. The shape and color options pair nicely with the Dallas Hardware found on our swing doors creating the perfect room accent. Available in nine finishes.



Slide doors continue to be a popular design for tighter spaces and are minimally invasive because an open panel simply covers the fixed portion.

Looking for a lot of glass, choose from 2 narrow stile options; 2 1/2" and 3 3/8". These traditional sliding patio doors provide the most visible glass of all our door products.

No room for a swinging door? Then compliment your home with an elegant wide 4 1/4" stile slide door from Lincoln. Our wide stiles feature more wood than a traditional slide door and become the perfect choice when using an alternate wood species.

Sliding patio door screens offer a heavy-duty extruded frame channel available in all our aluminum clad colors. There are adjustable rollers on top and bottom. Screen mesh options include BetterVue, UltraVue and aluminum.

Finish Options	Matte Black			
	Satin Nickel			
	Antique Nickel			
	Polished Chrome			
	Brushed Chrome			
Antique Brass				
Oil-Rubbed Brass				
Faux Bronze				
Polished Brass				
Sandstone				
Adobe				
White				
Allure				
Signature				
Contempo				

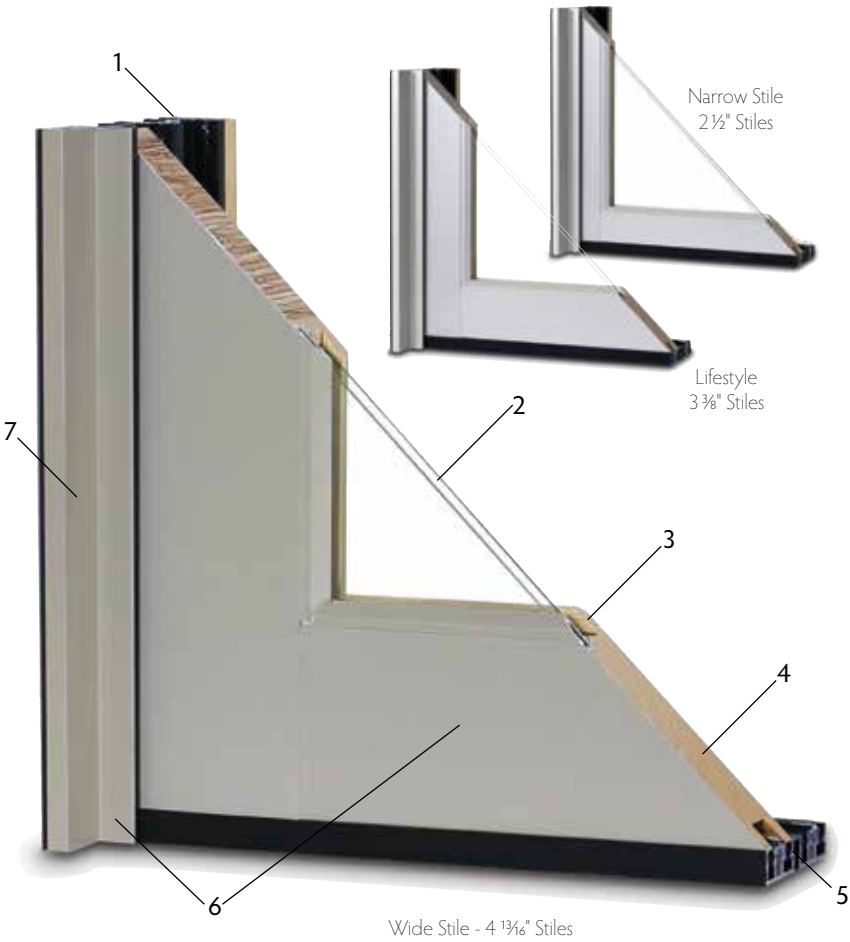
MULTI-SLIDE PATIO DOORS

Lincoln's multi-slide patio door is an extremely versatile system designed where immense areas of glass are desirable. A closed door will highlight elegant wide-stile panels or emphasize thin sight lines when using our narrow stile options.

Configurations

We offer numerous stacking or pocketing configurations from one panel to ten, creating a superb range of door widths and heights.

** It is highly recommended that the Multi Slide Door is installed in areas with a minimum 8' overhang to prevent water or air infiltration.*



	Specifications	
	1 3/4" Panel Thickness	2 1/4" Panel Thickness
Maximum Panel Width	4' 1/2"	6' 0"
Maximum Panel Height	9' 0"	10' 0"
Maximum Number of Panels	10 Panels	10 Panels
Approx. Maximum Width	38'	38'
Maximum Height	9' 3/4"	10' 3/4"
Stile Options	2 1/2", 3 3/8", 4 13/16"	3 3/8", 4 13/16"
Minimum Roof Overhang	8' 0"	8' 0"

- 1. Modular frame system.
- 2. 3/4" tempered insulating glass.
- 3. Interior wood glazing bead.
- 4. 1 3/4" thick panels. 2 1/4" thick panels optional.
- 5. Thermally-broken bronze anodized sill.
- 6. .050 extruded aluminum on panels and frame.
- 7. Frame width accommodates from 1 to 10 panels.



Our Lift & Slide is truly elegant, architecturally driven and entirely functional. Modern building systems allow for massive openings and Lincoln's ability to utilize panels up to 5' by 10' fits this design criteria perfectly. Operational concerns? No problem! The 'lift' system elevates the panel for simple, easy 'slide' action. Walls of patio doors will disappear leaving the extraordinary uninterrupted view you long for.

Configurations

- Pocketing
- Stacking
- 90° Corner/Inverse 90°
- One Way Direction
- Bi-Parting

Panel Options

Lincoln multi-slide doors systems feature 1 3/4" or 2 1/4" thick panels, perfect for your next building project whether its modern, contemporary or traditional appearing. Capture your spectacular view with just the right panel choice, door size and operational function.

- **Narrow Stile:** 2 1/2" Wide - 1 3/4" thick Only
- **Lifestyle Stile:** 3 3/8" Wide - 1 3/4" or 2 1/4" thick
- **Wide Stile:** 4 13/16" Wide - 1 3/4" or 2 1/4" thick

Operational Choices

Stacking: The stacking system allows all operating panels to fit over the end stationary panel. Door jamb widths will vary with the number of panels/tracks utilized. A pull handle is commonly used with this door for an additional design element.

Pocketing: Doors disappear fully into a specially designed wall cavity. A pocketing arrangement employs a flush lock permitting the locking panel to completely slide out-of-sight. What remains is an entirely open space.

Bi-Parting: Operating panels oppose to operate and join in the center with an astragal.

	Specifications
Maximum Panel Width	6' 0"
Maximum Panel Height	10' 0"
Minimum Panel Width	2' 0"
Maximum Number of Panels	10 Panels
Minimum Number of Panels	1
Door Panel Thickness	2 1/4"

MULTI-SLIDE PATIO DOORS

Multi-Slide Hardware

Two styles of lever pull handlesets are available for multi-slide stacking door configurations. The multi-slide comes standard with a stainless steel 2-point locking mechanism built for lasting appearance and performance. The adjustable rollers glide easily, quietly and are available in stainless steel.



Flush Pull Hardware

The attractive flush pull handles, designed to allow the panels to recess fully for pocketed multi-slide systems, can also be used for the stacking panel configurations when minimal hardware is desired. The flush pulls comes standard with the same 2-point locking gear utilized by the lever pull option.

Also available with Lincoln Standard Slide Patio Door with 3³/₈" & 4¹³/₁₆" stiles.



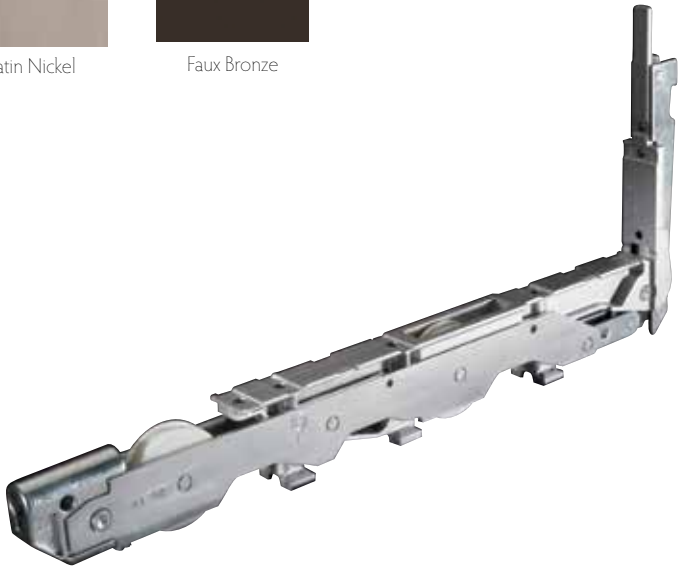
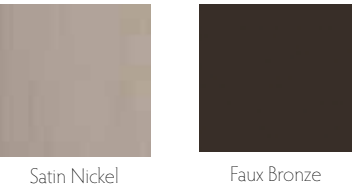
Our multi-slide patio doors are manufactured with Hoppe two point locking system.



MULTI-SLIDE PATIO DOORS

Lift-&-Slide Hardware

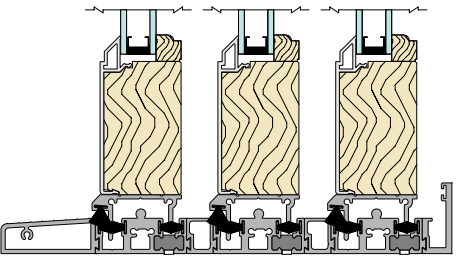
Operate these magnificent doors by turning the solid brass lever handle 180 degrees to 'lift' the panel easily up off of the sill track and on to the corrosion resistant carrier hardware. The 'slide' operation is smooth as the glass reinforced nylon rollers glide on a stainless steel track cap. Stacking doors feature non-removable hardware standard and pocketing doors use removable hardware as standard.



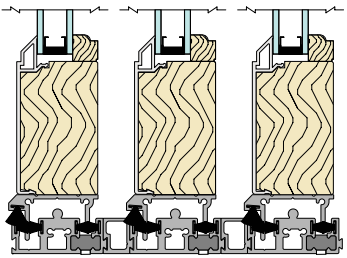
Carrier Bogie Wheel System

Sill Options

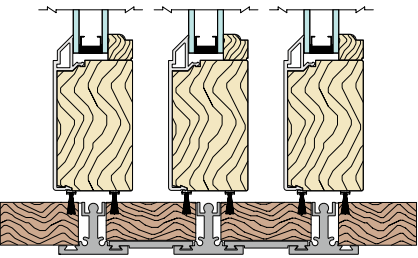
Three distinctive low profile sill options are available for the Multi-Slide and Lift & Slide doors and they accommodate nearly any flooring condition found when designing. The full width sill has an inside riser and a nosing system running the complete length of the door unit. The staggered track system features a flat edge, creating a smooth transtion to floor coverings. A weep system is available. Lincoln's 'T' track allows for a flooring detail between the track system minimizing the visable track area. Discuss your options for flat egress, a riser for water protection or minimalistic appearances with a pro dealer.



Full Sill w/ Nosing & Riser
Multi-Slide with 1-3/4" Panels



Stagger Sill - Low Profile
Multi-Slide with 1-3/4" Panels



T-Track Sill
Multi-Slide with 1-3/4" Panels

ENHANCEMENTS



Operating Sidelites

If you need to add more light to a room, expand your view of the outdoors, or require the convenience of ventilation, add an operating sidelite. These units are manufactured as an independent frame mulled to a door or installed separately and are available with 2 ½", 3 ¾", 4 13⁄16" or 6" stiles.

HOPPE® thumb-bolt hardware and a 3-point locking system for greater security is available in the same ten finishes as our swing patio door. This stainless steel system provides protection from panel warpage and is strong enough to support panels two feet in width. As with any Lincoln in-swing door, adjustable hinges are standard. Screens have a heavy-duty extruded frame, available in all our aluminum clad colors with several mesh options to choose from.



Sidelites

This popular option is available for both slide and swing doors with a multitude of combinations available.

Fixed swing door sidelites are commonly used as an alternate window when tempered glass is required near the ground, when matching sills are desired or as a potential cost savings.

Sidelites for slide doors can be specified with 3 ¾", 4 13⁄16" or 6" stiles, are shipped factory assembled and in virtually any size.



Transoms

With taller ceiling heights and the popularity of great rooms, windows and doors need to look and feel in proportion to the design. You can always go with a taller window or door, but transoms offer an exceptional design opportunity. Not only is the benefit more light, a key architectural element is added to your room.

Transoms may be split to align with the window or door configuration below or can be of a one-piece design extending over the entire span. Our transoms are made to exacting standards and can be built with narrow or wide stiles to maintain glass sight lines. When looking for a little extra style or flair, transoms are the simple and attractive solution for your taller window and door requirements.

Specialty Windows

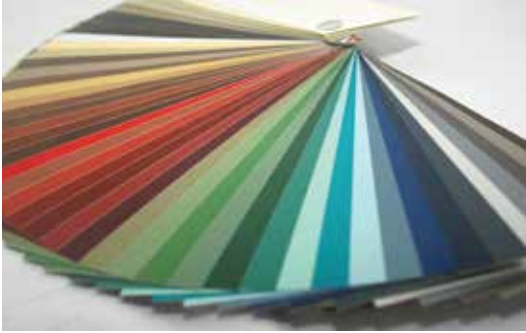
Do you want the freedom to design and build stunning window combinations that truly make a statement? Specialty shaped windows accent patio doors by adding curb appeal and dramatic visual lines.

Radius and geometric windows will be made-to-order to your unique dimensions and will compliment the door units below. Lincoln can supply the interior trim package, produced at our factory, for an exact match of the radius. For gable end windows requiring a particular roof pitch, specify one of our many geometric shapes.



ENHANCEMENTS

EXTERIORS/INTERIORS



38 feature colors

Exteriors

Aluminum Clad: Lincoln clad patio doors are protected by the superior performing AAMA 2605 exterior paint. Rigorous specifications outline the significant attributes of our paint (including premium fade and chalk resistance) and the AAMA 2605 threshold is the highest measurable rating for the fenestration industry.

Trim: Add that finishing touch to the exterior of your patio doors by trimming them with brickmould and casings. Along with enriching the aesthetics of your home, these factory-applied trims reduce the installation labor and hassle.

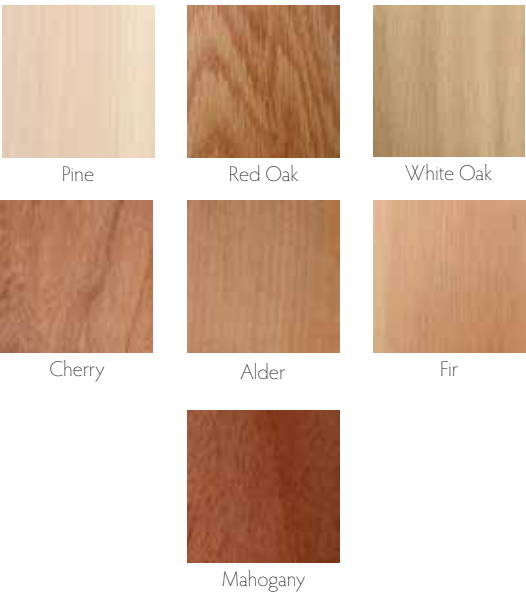
Additional Options

Accessorize your Lincoln products with our extensive offering of options including: rigid aluminum nail fins, extension jambs, installation clips, mulling and panning systems and more.

Standard Colors - AAMA 2605



Spray-On Anodized Colors - AAMA 2604



Interiors

Wood Species: Nothing enhances the look and feel of a room more than the richness and natural beauty of wood. With that in mind, we offer seven luxurious wood species.

Finishes: Define inner beauty by choosing a time saving, factory applied interior finish of primed, Pre-Finished White and Pre-Finished Black. Painted units have the final coat of latex paint factory applied with nail holes puttied.

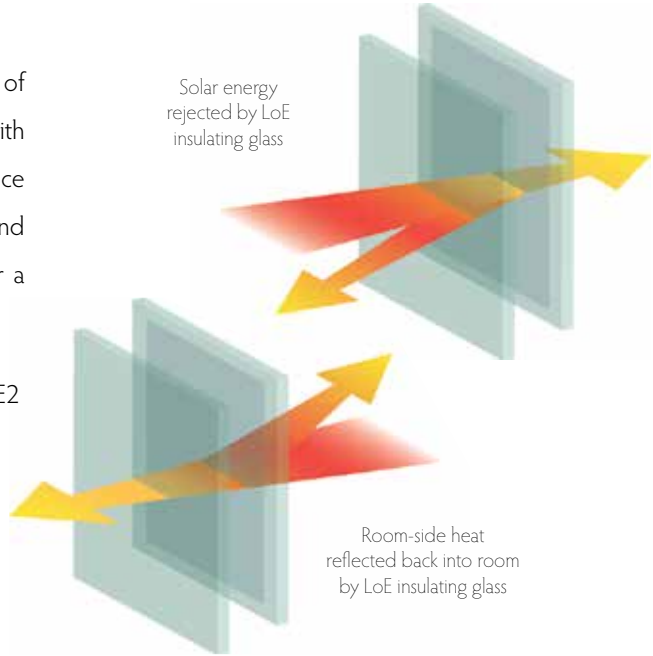
Trim: We offer interior trims in ten profiles for radius products. The benefit to our customers is the ability to shape the trim at the time the unit is produced. In addition, plinth blocks are available, to facilitate joining radius to straight trim.

GLASS/SCREENS/LITES & GRILLES

Glass

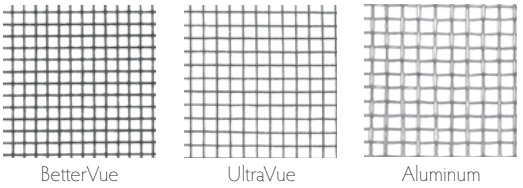
Glass is undeniably the most thought about, debated and prevalent component of a window or patio door. We use double strength (or thicker) glass combined with warm edge spacer technology. An insulating glass unit has a significant influence on energy performance and heavier glass is more resistant to stress cracks and seal-failures, the leading cause of glass issues. Choose our standard glass or a combination of the options for appearance, performance and comfort.

- **Energy Efficient:** Clear IG, LoE-180™, LoE²-272®, LoE³-366™/Neat®, Dual Low-E2 (LoE-i89™/LoE²-272®) & Dual Low-E3 (LoE-i89™/LoE³-366™/Neat®).
- **Thermal comfort:** 1¾" Triple Pane.
- **Low Maintenance:** Neat® & Preserve®.
- **Specialty:** Tinted, patterned, laminated, tempered & more.



Screens

BetterVue is our standard screen mesh. It has thinner strands and a tighter weave than traditional fiberglass screen providing better visibility, increased light transmittance, greater airflow, improved curb appeal and enhanced protection from small insects (no-see-ums), debris and dust.



Lites and Grilles

Simulated Divided Lite

- Profiled: 5/8", 7/8", 1 1/8" and 2"
- Square: 5/8", 7/8" and 1 1/8"
- Interior/Exteriors
- Bronze, Black & Mill Finish Shadow Bar

Interior Wood Grille

- 5/8", 7/8", 1", 1 1/8" and 1 1/4"
- With Surround
- Without Surround

Interior Aluminum Grille

- 1 1/8" Double Profiled
- Color Matched to Cladding (Standard & Feature Colors)
- Two-Toned (white one side, 9 standard colors on other side)

Lincoln Divided Lite

- 1 1/4" Insul or 7/8" Single Glased
- Authentic Divided Lites
- True Historic Appeal
- Not available in Speices



Simulated Divided Lite



Interior Wood Grille



Internal Aluminum Grille



Lincoln Divided Lite (Primed only)

Due to printing limitations, all colors shown are for representation only.





When only the best will do.

Choose Lincoln for your new construction, remodeling or even light commercial projects. With over 70 years of manufacturing experience built into every unit, we engineer our windows and patio doors for visual appeal as well as outstanding performance. In addition, Lincoln backs it up with exceptional customer service before and after the sale.

We are continually expanding our list of product offerings, options, and accessories and are confident that we have the perfect window or patio door to harmonize with your ideas and designs.



Lincoln Wood Products, Inc.
1400 W. Taylor Street • P.O. Box 375
Merrill, Wisconsin 54452-1355
800-967-2461 • Fax: 715-536-9783
www.lincolnwindows.com



Additional information on our products and options can be found at an authorized Lincoln dealer or online at lincolnwindows.com.



Committed to protecting and preserving the environment.

Lincoln Windows is committed to environmental stewardship. As responsible corporate citizens, we are dedicated to manufacturing energy efficient products and managing our resources in a manner that reduces our impact on the environment.



Lincoln Windows is an ENERGY STAR® Partner.



Many of our products carry certification by the National Fenestration Rating Council (NFRC).



Lincoln products carry an extensive warranty. Ask your dealer for complete information.



Lincoln Windows & Patio Doors proudly supports the American Institute of Architects (AIA) Continuing Education System (CES).